

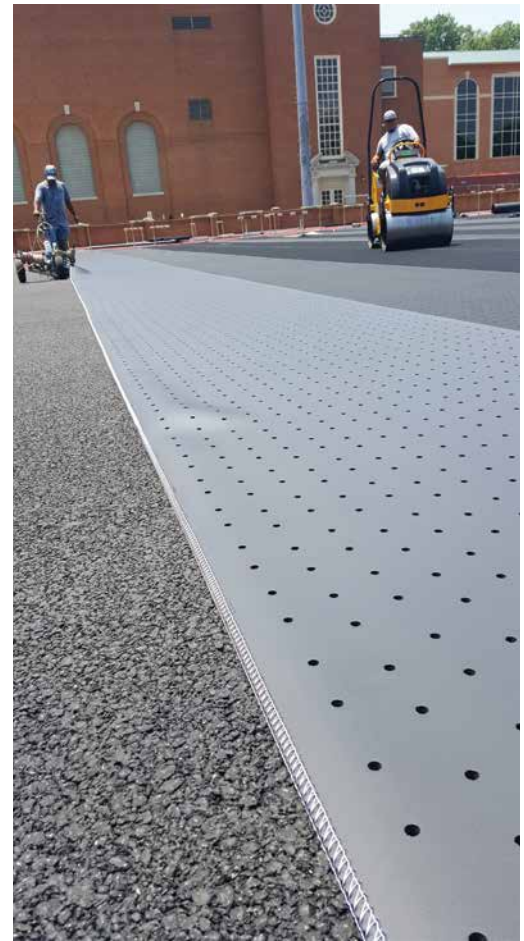
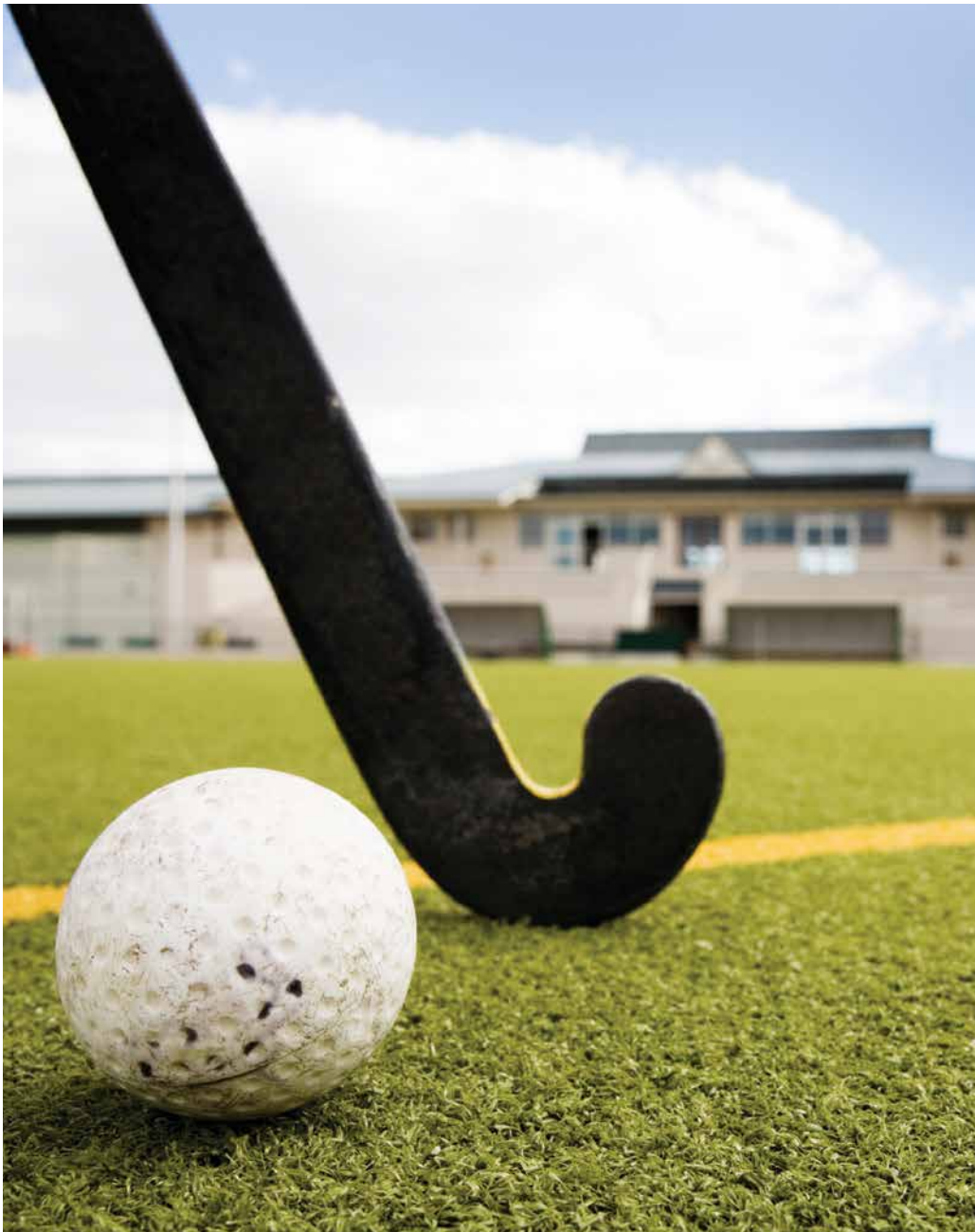
100% PROTECTION FOR THE WINNING EDGE

ArmaSport^{TU2}

Armacell's ArmaSport[®] TU2 is the ideal turf underlayment shock pad for exceptional sports field performance and consistent playing conditions from goal to goal.

- // Ideal turf underlayment pad for exceptional sports field performance and consistent playing conditions
- // Black Vinyl Nitrile (NBR / PVC) blended rubber product
- // ASTM D 1056 2A2 / 2C2 / 2B2 closed cell rubber
- // Manufactured in rolls

www.turf.armacell.us



 **armacell**[®]
ArmaSport[®]

Unbeatable Protection

ArmaSport® is the superior turf underlayment for greater field performance and consistent playing conditions. As a shock pad, ArmaSport TU2 cushions the playing surface, providing consistent shock attenuation across the entire field surface. It features closed-cell elastomeric foam technology, an optional drainage system, antimicrobial protection, and long, wide rolls for easy installation. ArmaSport turf underlayment is manufactured by Armacell, an innovator in foam technologies and a leading-edge, global manufacturer for more than 60 years.



Performance that's Engineered for Success.

Armacell's ArmaSport turf underlayment shock pad is a proven turf pad for exceptional sports field performance and consistent playing conditions. Unlike fields that depend on infill material, ArmaSport installations provide protection across 100% of the field – no loss or migration of the cushioning material.

ArmaSport shock pad provides smooth, flat coverage under synthetic turf field installations. Used with or without infill material, ArmaSport installations provide continuous protection, but with no direct contact with the players. This means athletic directors can count on the same amount of shock pad anywhere on the field—all the time—ensuring a safer playing environment for the team.

Athletic programs trust the expertise Armacell brings to athletic directors, facilities managers, or turf professionals responsible for installing and maintaining premier synthetic turf fields.

Applications:

(Suitable for use under any synthetic turf field)

- // Field Hockey
- // Football
- // Soccer
- // Lacrosse
- // Baseball
- // Scrimmage field
- // Indoor practice fields
- // Multi-purpose/Multi-use fields
- // Portable fields
- // Warm-up areas

Features:

- // Provide consistent shock attenuation across the entire playing surface
- // 100% protection, 100% of the time
- // Unlike infill, no loss or migration of the cushioning material
- // Turf-carpet widths make installation fast
- // Optional drainage system

PHYSICAL PROPERTY GUIDE

ArmaSport	Density (lb / ft ³)	Density (kg / m ³)	25% Compression Deflection (psi)	25% Compression Deflection (kPa)	Polymer	Color
TU2	6.5 - 8.5	104 - 136	6 - 9	41.4 - 62.1	PVC / NBR	Black

WATER INFILTRATION / DRAINAGE

// **Test Method:** British Standard (BS) 7044 Method 4
 // **Title:** Determination of infiltration rate-buffered ponding-type infiltrometer

// **Standard Turf Description:** 42 oz. (2.25" Pile Height) Monofilament Synthetic Turf
 // **Infill:** 3.3 lbs / ft² Rubber mixed with 3.0 lbs / ft² Sand

ArmaSport Turf Underlayment Pad

TU2	TU2	TU2	No Pad
Pad Description: 5/8" flat pad no ridges and not perforated	Pad Description: 5/8" perforated flat pad	Pad Description: 5/8" ridges and perforated pad Note: Pad was tested with ridge side down	
Inches / hour = 3	Inches / hour = 25	Inches / hour = 31	Inches / hour = 52
Centimeters / hour = 7	Centimeters / hour = 64	Centimeters / hour = 79	Centimeters / hour = 132
Note: Drainage was lateral between the turf and pad			

SHOCK ABSORPTION: G-MAX

// **Test Method:** ASTM F 355 (2 foot [24"] Drop Height)
 // **Title:** Standard Test Method for Shock-Absorbing Properties of Playing Surface Systems and Materials

// **Standard Turf Description:** 42 oz. (2.25" Pile Height) Monofilament Synthetic Turf
 // **Infill:** 3.3 lbs / ft² Rubber mixed with 3.0 lbs / ft² Sand
 // **Sub Base:** 3" crushed rock

Description of Turf and Infill	ArmaSport Turf Underlayment Pad		
	TU2		
	5/8" Pad with No Ridges		
	G-max Reading Drop #2	G-max Reading Drop #3	Average G-max Reading
Pad under standard turf and standard infill	57	59	58
Pad under standard turf and half infill	64	67	66
Pad under standard turf and no infill	83	91	87
NO PAD standard turf and standard infill	118	125	122



PHYSICAL PROPERTIES GUIDE CHART

Physical Property	ArmaSport TU2	
Polymer	PVC / NBR	
Color	Black	
Form	Rolls (Sheets Available)	
Ridges	Available with and without	
Perforation	Available with and without	
ASTM D 1056 Designation	2A2 / 2C2 / 2B2	
Compression Deflection, 25% (psi) per ASTM D 1056	6 - 9 psi (41.4 - 62.1 kPa)	
Density per ASTM D 1056, lb / ft ³	6.5 - 8.5 lb / ft ³ (104 - 136 kg / m ³)	
Compression set, 50% compression, 22 h @ room temperature, 24 h recovery, % of original deflection per ASTM D 1056	25% max	
Water Absorption by wt. % per ASTM D 1056	≤5%	
Tensile Strength per ASTM D 412 Die A, psi (kPa)	80 psi min (551 kPa min)	
Elongation per ASTM D 412 Die A, %	100% min	
Tear Strength per ASTM D 624 Die C, lb/in	10 lb / in min (1.75 kN/m min)	
Shock Absorption per ASTM F 355 (24" drop)		
Standard Turf Description:	G-max	Description of foam and test condition
42 oz (2.25" PH) Monofilament Synthetic Turf	58	Ridged foam under turf with standard infill
Infill: 3.3 lbs / ft ² Rubber mixed with 3.0 lbs / ft ² Sand	66	Ridged foam under turf with half infill
Sub Base: 3" crushed rock All pad thicknesses = 5/8" (0.625")	87	Ridged foam under turf with no infill

All ArmaSport Pads

Water Infiltration Rate per BS 7044 Method 4 (in / hour) and (cm / hour)	5/8" flat pad (no ridges or perforation) under standard turf and infill: 5/8" flat perforated pad under standard turf and infill: 5/8" ridged and perforated pad under standard turf and infill: No pad under standard turf and infill:	3" (7 cm) / hour 25" (64 cm) / hour 31" (79 cm) / hour 52" (132 cm) / hour
Fungus Resistance per ASTM G 21	Rating 0 Specimen remained free of fungal growth	
Ozone Resistance per ASTM D 1171	Rating 0 No Cracking	

All data and technical information are based on results achieved under typical application conditions. It is the customer's responsibility to verify if the product is suitable for the intended application. The responsibility for professional and correct installation and compliance with relevant building regulations lies with the customer. By ordering/receiving product you accept the **Armacell General Terms and Conditions of Sale** applicable in the region. Please request a copy if you have not received these.

© Armacell, 2019. ArmaSport is a registered trademark of the Armacell Group

00115 | ArmaSport TU2 | TDS | 022019 | NA | EN-A | 5436

ABOUT ARMACELL

As the inventors of flexible foam for equipment insulation and a leading provider of engineered foams, Armacell develops innovative and safe thermal, acoustic and mechanical solutions that create sustainable value for its customers. Armacell's products significantly contribute to global energy efficiency making a difference around the world every day. With 3,000 employees and 25 production plants in 16 countries, the company operates two main businesses, Advanced Insulation and Engineered Foams. Armacell focuses on insulation materials for technical equipment, high-performance foams for high-tech and lightweight applications and next generation aerogel blanket technology.



For more information, please visit:
www.turf.armacell.us
info.us.cf@armacell.com