

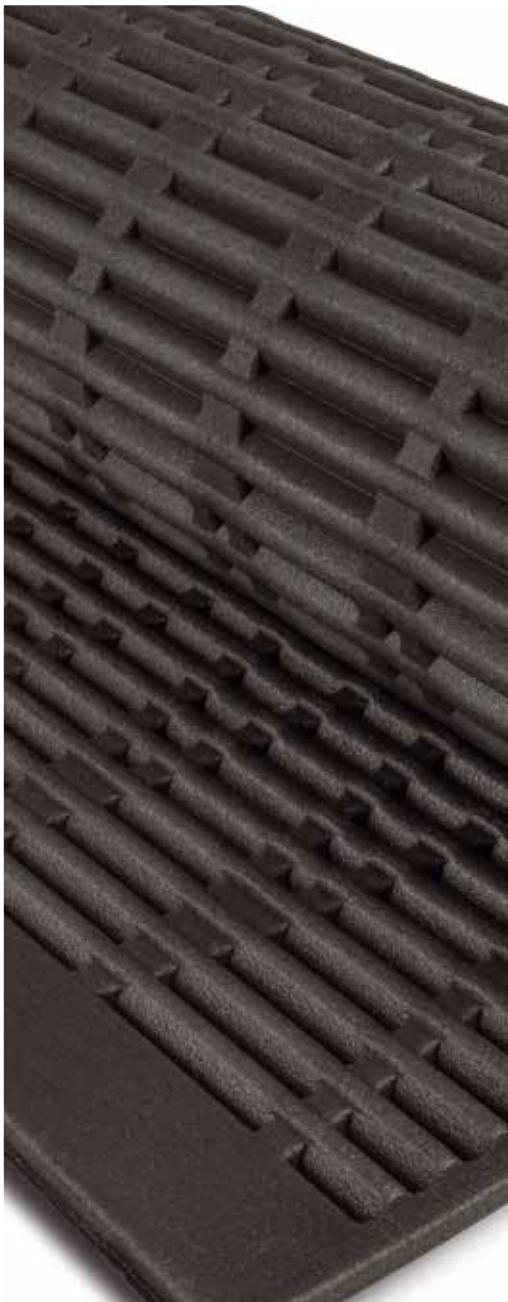
ENGINEERED FOR VERSATILITY

OleTex[®] CKJN 300

Closed cell PE crosslinked polyolefin foam in continuous rolls / sheets form

- // Chemically crosslinked
- // Tested per ASTM D 3575
- // Multiple colors available
- // Listed on the approved source list for Stellantis (FCA / Chrysler) MSAY 551 Grade 2

www.armacell.us



 **armacell**[®]
ArmaComp[™]

OLETEX CKJN 300 | Closed cell PE crosslinked polyolefin foam in continuous rolls / sheets form

OleTex CKJN 300: Armacell (Yukon, OK Plant) manufactures a continuous, (rolls / sheets) closed cell, 2.7 - 3.3 lb/ft³ [43.2 - 52.9 kg/m³] density, PE crosslinked polyolefin foam product CKJN 300. CKJN 300 meets the requirements of FMVSS 302 at 0.250" (1/4") (6.35 mm) & higher. **CKJN 300 is listed on the approved source list for Stellantis (FCA / Chrysler) MSAY 551 Grade 2.** CKJN 300 is available in a variety of colors. ** This product is not intended for elevated temperature applications.

TECHNICAL DATA SHEET | ROLLS / SHEETS (effective 6DEC21)

POLYMER: PE

Physical Property	Test Method	Unit	Value
Cell Structure	-	-	Closed
Color	-	-	Multiple
Compression Deflection 10%	ASTM D 3575 Suffix D	psi kPa	4.5 - 8 31.0 - 55.2
Compression Deflection 25%	ASTM D 3575 Suffix D	psi kPa	8 - 12 55.2 - 82.7
Compression Deflection 40%	ASTM D 3575 Suffix D	psi kPa	13 - 17.5 89.6 - 120
Compression Deflection 50%	ASTM D 3575 Suffix D	psi kPa	18 - 23 124 - 158
Compression Set (Room temp)	ASTM D 3575 Suffix B	%	TBD
Density	ASTM D 3575 Suffix W	lb/ft ³ kg/m ³	2.7 - 3.3 43.3 - 52.9
Elongation	ASTM D 3575 Suffix T	%	110 min
Flammability	FMVSS 302	in mm	0.25 and higher 6.35 and higher
Service Temperature	Low	°F °C	-65 -54
	High Intermittent	°F °C	210 99
Tear Strength	ASTM D 3575 Suffix T	lb/in kN/m	13.5 min 2.3 min
Tensile Strength	ASTM D 3575 Suffix T	psi kPa	45 min 310 min
Thermal Stability	ASTM D 3575 Suffix S	%	TBD
Water Absorption	ASTM D 3575 Suffix L	lb/ft ² kg/m ²	0.1 max 0.5 max

All data and technical information are based on results achieved under the specific conditions defined according to the testing standards referenced. Despite taking every precaution to ensure that said data and technical information are up to date, Armacell does not make any representation or warranty, express or implied, as to the accuracy, content or completeness of said data and technical information. Armacell also does not assume any liability towards any person resulting from the use of said data or technical information. Armacell reserves the right to revoke, modify or amend this document at any moment. It is the customer's responsibility to verify if the product is suitable for the intended application. The responsibility for professional and correct installation and compliance with relevant building regulations lies with the customer. This document does not constitute nor is part of a legal offer to sell or to contract.

At Armacell, your trust means everything to us, so we want to let you know your rights and make it easier for you to understand what information we collect and why we collect it. If you would like to find out about our processing of your data, please visit our [Data Protection Policy](#).

© Armacell, 2022. All rights reserved. Trademarks followed by © or TM are trademarks of the Armacell Group.
OleTex CKJN 300 | DataSheet | 012022 | NA | EN-A

ABOUT ARMACELL

As the inventors of flexible foam for equipment insulation and a leading provider of engineered foams, Armacell develops innovative and safe thermal, acoustic and mechanical solutions that create sustainable value for its customers. Armacell's products significantly contribute to global energy efficiency making a difference around the world every day. With 3,200 employees and 24 production plants in 16 countries, the company operates two main businesses, Advanced Insulation and Engineered Foams. Armacell focuses on insulation materials for technical equipment, high-performance foams for high-tech and lightweight applications and next generation aerogel blanket technology.

For more information, please visit:

www.armacell.us

info.cf.us@armacell.com

800-973-0490

